

APPLICATION:

PRODUCT NAME:
SINGLE DECK KETTLE FILLER

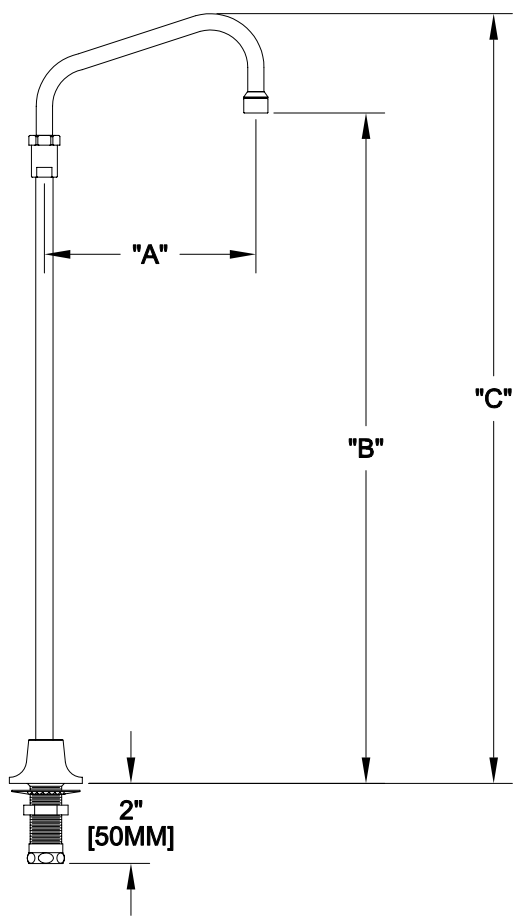
JOB NAME:

_____ SPECIAL CONFIGURATION
CHECK BASE MODEL AND OPTIONS

QUANTITY:

ITEM NO.:

MODEL:
 2178 WITH 6" SWING SPOUT
 2186 WITH 8" SWING SPOUT
 2194 WITH 10" SWING SPOUT
 2208 WITH 12" SWING SPOUT
 2216 WITH 14" SWING SPOUT
 2224 WITH 16" SWING SPOUT



OPTIONS OR MODIFICATIONS:
 SUPPLY LINES (24" OR 36") CIRCLE LENGTH
 VANDAL RESISTANT KIT
 OTHER _____

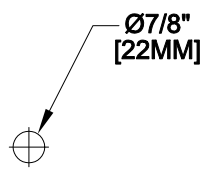
FEATURES
 * SINGLE DECK RIGID BASE
 * 1/2" MALE INLET
 * 1/2" SLIP JOINT

SYSTEM LIMITS
 * TEMP: 40°F MIN. TO 140°F MAX.
 * PRESSURE 200 PSI MAX. STATIC
 * 2.20 GPM AT 80 PSI

SHIPPING WEIGHT
 * 5.0 LBS

MODEL	DIM "A"	DIM "B"	DIM "C"
2178	6" [150MM]	23" [584MM]	26-5/8" [676MM]
2186	8" [200MM]	23-1/4" [590MM]	27-1/8" [689MM]
2194	10" [250MM]	23-7/8" [606MM]	27-5/8" [701MM]
2208	12" [300MM]	24-1/2" [622MM]	28-1/8" [714MM]
2216	14" [350MM]	25-1/8" [638MM]	29" [736MM]
2224	16" [400MM]	25-7/8" [657MM]	29-5/8" [752MM]

ROUGH-IN:



ANSI/A112.18.1M

FISHER
 FISHER MANUFACTURING COMPANY
 TOLL FREE: 800-421-6162 - FAX: 800-832-8238
 information@fisher-mfg.com - www.fisher-mfg.com